



Fiber Duct





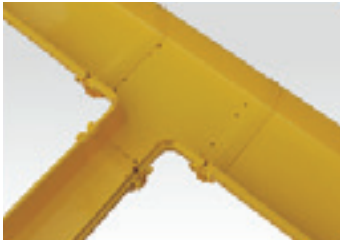
Horizontal T Bend



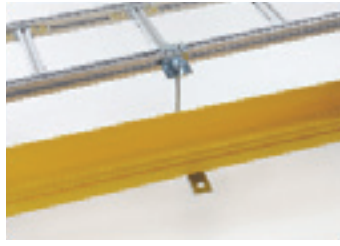
Exit Kit - Pipe Type



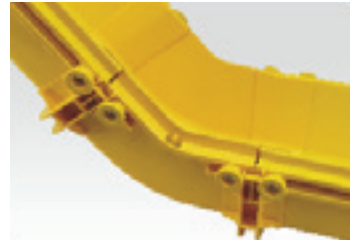
Reducer



Horizontal T (240 to 120)



Hanging Set



45° Vertical Up



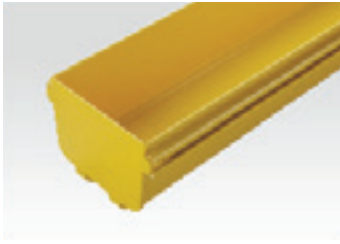
45° Vertical Down



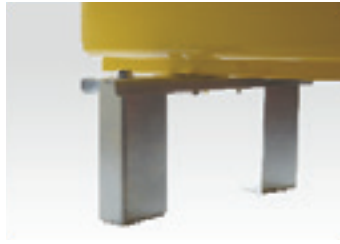
Vertical T (240 to 120)



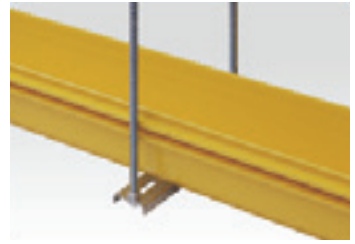
Horizontal Cross



End Cap



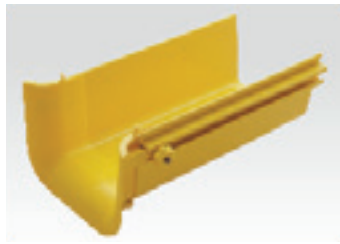
Cabinet Top Stand



Duct Hanging Set



Exit Kit - Duct Type



Trumpet Exit



90° Horizontal Bend

LANDE FIBER DUCTS

LANDE Fiber Ducts, specially used in Datacenter and Telecommunication applications, where duct system is designed to protect and route fiber optic patch cords, cable assemblies to and from fiber guide closures, ODF and other terminal devices. Protecting cables from external physical effects and electrical interferences, thus provides a better operational structure.

LANDE Fiber Ducts main parts are made of PVC and all rest accessories (brackets, corners, T bends, connections, exit parts..etc) are made of ABS Acrylonitrile Butadiene Styrene)

All size of Fiber Ducts as W120, W240 and W300mm are comply with **IEC EN 61537:2007** - Cable management. Cable tray systems and cable ladder systems and **IEC EN 62321-5:2013** Determination of certain substances in electrotechnical products. Cadmium, lead and chromium in polymers and electronics and cadmium and lead in metals by AAS, AFS, ICP-OES and ICP-MS which is so called RoHS Restriction of Hazardous Substances, based on proper conformity testings products are in accordance with CE regulations.

Temperature Resistance,

LANDE Fiber Ducts are tested under -40°C and 16 hours long for temperature resistance tests, no any cracks, hardening is observed. At 60°C under 20N surface pressure test d:0,85mm surface deformation happened, while the standard consider more than d:2,0mm surface deformation as a failing criteria

Fire Resistance,

LANDE Fiber Ducts placed open fire at 10 minutes, than in 2 minutes the fire stops, do not move forward and no dripping happened. Standard in this test accepts to have fire stopped in 30 minutes, and no dripping as an acceptance criteria.

Electrical Isolation,

LANDE Fiber Ducts have given result of more than 100 kΩ isolation performance, under test conditions of %93 humidity, 40°C temperature, 48 hours long. As well for high voltage tests resists to 42kV voltage 60seconds- have not observed any deformation or holes on the ducts. Standard acceptance criteria is more than 5 kΩ and 42 kV voltage for 60 seconds.



LANDE FIBER DUCTS

W120 mm Fiber Duct

LN-FD120-200
W1200mm H100mm Fiber
Duct, L2000mm



LN-FD120-200-CVR
W120mm Fiber Duct
Cover, L2000mm



LN-FD120-ELB90
W120mm Fiber Duct,
90° Horizontal Bend



LN-FD120-ELB90-CVR
W120mm Fiber Duct,
90° Horizontal Bend Cover



LN-FD120-T
W120mm Fiber Duct,
Horizontal T



LN-FD120-T-CVR
W120mm Fiber Duct,
Horizontal T Cover



LN-FD120-CRS
W120mm Fiber Duct,
Horizontal Cross



LN-FD120-CRS-CVR
W120mm Fiber Duct,
Horizontal Cross Cover



LN-FD120-VD45
W120mm Fiber Duct,
45° Vertical Down Bend
(Outside)



LN-FD120-VD45-CVR
W120mm Fiber Duct,
45° Vertical Down
Bend Cover (Outside)



LN-FD120-VU45
W120mm Fiber Duct,
45° Vertical Up Bend
(Inside)



LN-FD120-VU45-CVR
W120mm Fiber Duct,
45° Vertical Up Bend
Cover (Inside)



LN-FD120-CNT
W120mm Fiber Duct,
Connector



LN-FD120-END
W120mm Fiber Duct,
End Cap



LANDE FIBER DUCTS

W120 mm Fiber Duct

LN-FD120-VT
W120mm Fiber Duct,
Vertical T Exit



LN-FD120-VT-CVR
W120mm Fiber Duct,
Vertical T Exit Cover



LN-FD120-TRP
W120mm Fiber Duct,
Trupmet



LN-FD120-HNG-SET
W120mm Fiber Duct,
Hanging Set



LN-FD120-BAR
W120mm Fiber Duct,
Brace



LN-FD120-CTS
W120mm Fiber Duct,
Cabinet Top Stand



LN-FD-OUT-PT
Fiber Duct, Movable
Exit Kit Pipe Type



LN-FD-OUT-DT
Fiber Duct, Movable
Exit Kit 120mm
Duct Type



LN-FD-ROD-2M
Fiber Duct Ø14 mm
Rod (L2000mm)



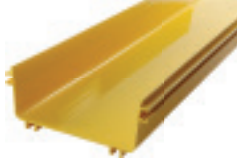
LN-FD-NUT
Fiber Duct
Screw&Nut (1 pc)



LANDE FIBER DUCTS

W240 mm Fiber Duct

LN-FD240-200
W240mm H100mm
Fiber Duct, L2000mm



LN-FD240-200-CVR
W240mm Fiber Duct
Cover, L2000mm



LN-FD240-ELB90
W240mm Fiber Duct,
90° Horizontal Bend



LN-FD240-ELB90-CVR
W240mm Fiber Duct,
90° Horizontal Bend Cover



LN-FD240-T
W240mm Fiber Duct,
Horizontal T



LN-FD240-T-CVR
W240mm Fiber Duct,
Horizontal T Cover



LN-FD240-CRS
W240mm Fiber Duct,
Horizontal Cross



LN-FD240-CRS-CVR
W240mm Fiber Duct,
Horizontal Cross Cover



LN-FD240-VD45
W240mm Fiber Duct,
45° Vertical Down
Bend (Outside)



LN-FD240-VD45-CVR
W240mm Fiber Duct,
45° Vertical Down Bend
Cover (Outside)



LN-FD240-VU45
W240mm Fiber Duct,
45° Vertical Up
Bend (Inside)



LN-FD240-VU45-CVR
W240mm Fiber Duct,
45° Vertical Up
Bend Cover (Inside)



LN-FD240-CNT
W240mm Fiber Duct,
Connector



LN-FD240-END
W240mm Fiber Duct,
End Cap



LANDE FIBER DUCTS

W240 mm Fiber Duct

LN-FD240-VT
W240mm Fiber Duct,
Vertical T Exit



LN-FD240-VT-CVR
W240mm Fiber Duct,
Vertical T Exit Cover



LN-FD240-HTC120
W240mm Fiber Duct,
120mm Horizontal T



LN-FD240-HTC120-CVR
W240mm Fiber Duct,
120mm Horizontal T Cov



LN-FD240-RDC120
W240mm Fiber Duct,
Reducer to 120mm



LN-FD240-RDC120-CVR
W240mm Fiber Duct,
Reducer Cover to 120mm



LN-FD240-HGS-SET
W240mm Fiber Duct,
Hanging Set



LN-FD240-BAR
W240mm Fiber Duct,
Brace



LN-FD240-CTS
W240mm Fiber Duct,
Cabinet Top Stand



LN-FD-OUT-PT
iber Duct, Movable
Exit Kit Pipe Type



LN-FD-OUT-DT
Fiber Duct, Movable
Exit Kit 120mm
Duct Type



LN-FD-ROD-2M
Fiber Duct Ø14 mm
Rod (L2000mm)



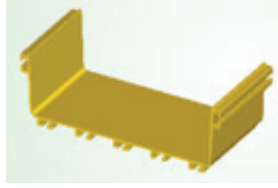
LN-FD-NUT
Fiber Duct Screw&Nut (1 pc)



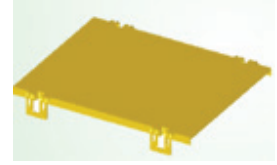
LANDE FIBER DUCTS

W300 mm Fiber Duct

LN-FD300-200
W300mm H100mm
Fiber Duct, L2000mm



LN-FD300-400-CVR
W300mm Fiber Duct
Cover, L2000mm
(5 pcs 40 cm)



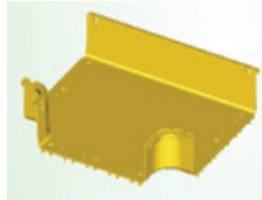
LN-FD300-ELB90
W300mm Fiber Duct,
90° Horizontal Bend



LN-FD300-ELB90-CVR
W300mm Fiber Duct,
90° Horizontal
Bend Cover



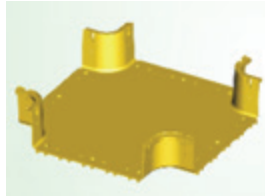
LN-FD300-T
W300mm Fiber Duct,
Horizontal T



LN-FD300-T-CVR
W300mm Fiber Duct,
Horizontal T Cover



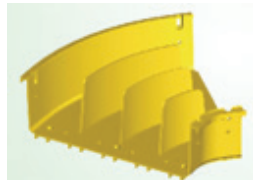
LN-FD300-CRS
W300mm Fiber Duct,
Horizontal Cross



LN-FD0-CRS-CVR
W300mm Fiber Duct,
Horizontal Cross Cover



LN-FD300-ELB45
W300mm Fiber Duct,
45° Horizontal Bend



LN-FD300-ELB45-CVR
W300mm Fiber Duct,
45° Horizontal Bend Cover



LN-FD300-VD90
W300mm Fiber Duct,
90° Vertical Daown Bend



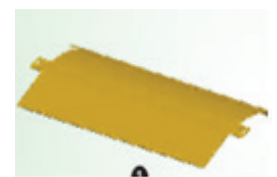
LN-FD300-VD90-CVR
W300mm Fiber Duct,
90° Vertical Down
Bend Cover



LN-FD300-VD45
W300mm Fiber Duct,
45° Vertical Down
Bend (Outside)



LN-FD300-VD45-CVR
W300mm Fiber Duct,
45° Vertical Down
Bend Cover (Outside)



LANDE FIBER DUCT

W300 mm Fiber Duct

LN-FD300-VU45
W300mm Fiber Duct,
45° Vertical Up Bend
(Inside)



LN-FD300-VU45-CVR
W300mm Fiber Duct,
45° Vertical Up
Bend Cover (Inside)



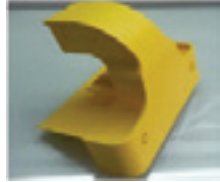
LN-FD300-CNT
W300mm Fiber Duct,
Connector



LN-FD300-END
W300mm Fiber Duct,
End Cap



LN-FD300-OUT
W300mm Fiber Duct,
Movable Exit Kit



LN-FD300-LBAR
W300mm Fiber Duct,
L Type Bracket



LN-FD300-ROD
W300mm Fiber Duct,
Rod



LN-FD-ROD-2M
Fiber Duct Ø14 mm
Rod (L2000mm)



LN-FD-NUT
Fiber Duct
Screw&Nut (1 pc)

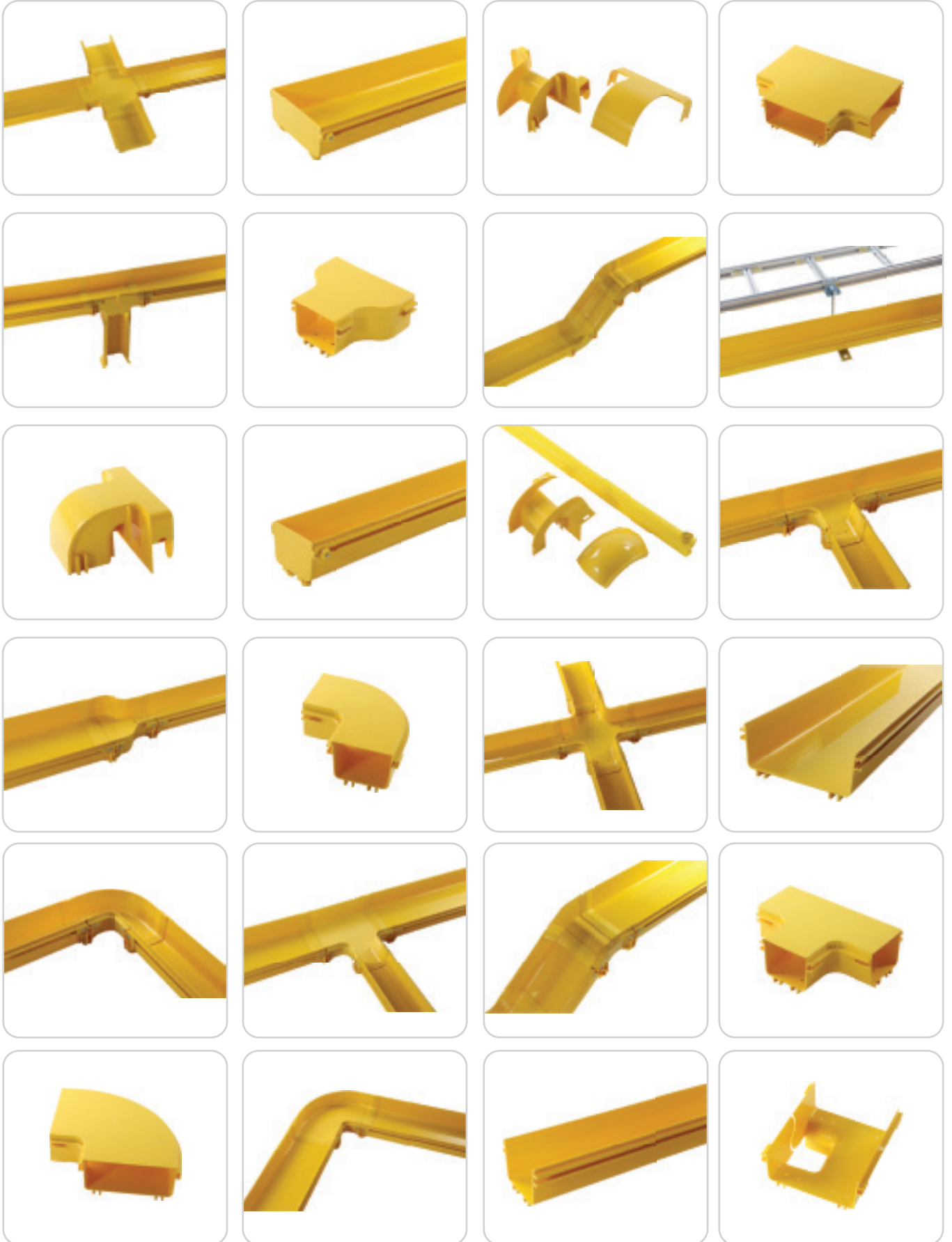


LANDE FIBER DUCT
References - Applications



LANDE FIBER DUCT

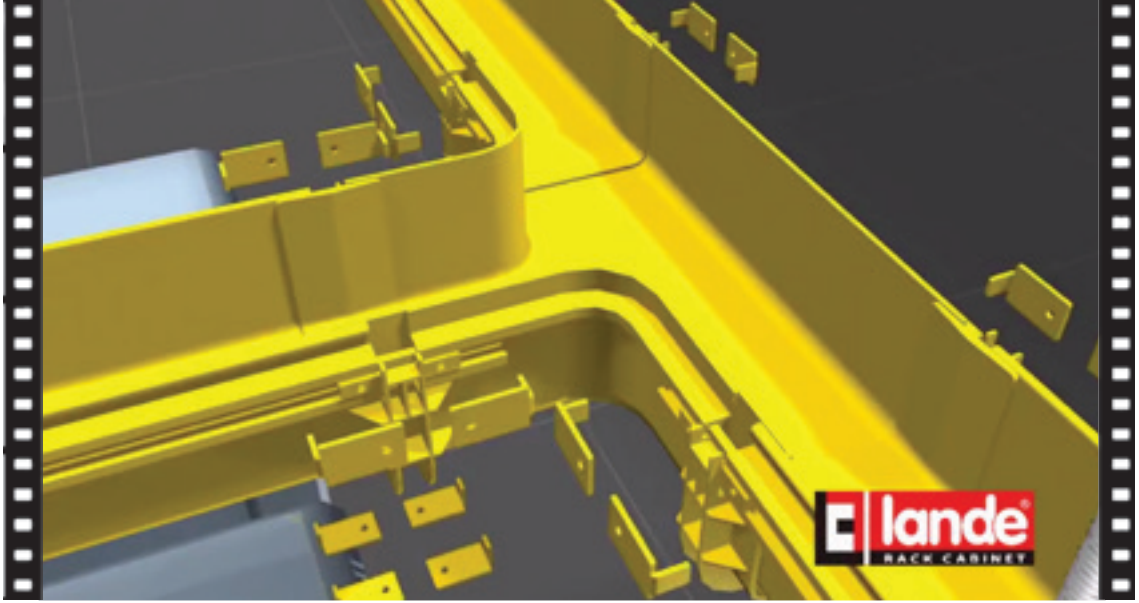
Application Samples





Lande Video for Fiber Duct

VIDEO



<https://youtu.be/Vip8wOnm5TU>





HEAD OFFICE

Safa Mah. Ataturk Cad. Yagiz Sk.
No: 4 Yenidogan - Sancaktepe
Istanbul / TURKEY
Phone: +90 216 312 26 53 pbx
Fax : +90 216 312 09 09

FACTORY

20. Cadde No:14 Eskisehir
Organize San. Bolg. 26110
Eskisehir / TURKEY
Phone: +90 222 236 24 66 pbx
Fax : +90 222 236 13 53

