

# SLIMBox Series

Wall Mounting 19" SERVER Cabinets  
W=500mm



## SLIMBox Series – Wall Mounting 19" SERVER Cabinets W=500mm

Wall Mounted 19" Server Cabinet Allow Vertical Mounting for Space Efficiency and Aesthetics. For Users Who Needs Sole Server Device and Economical Solution. Used for UPS, Networking, Security, DVR, Sound, Paging and Patching Applications. Suitable for any 19" Active Devices

### Features :

- Securely and separately locking hinged body for two sections; top and front doors.
- 740mm usable equipment (server or UPS) depth (vertical)
- Upper bay mounts patch panels and pivots.
- Lower bay mounts server or UPS devices.
- Punched knockouts in the back panel with plastic cover for cable entry:
  - Right and left – 70x145 mm
  - Top and bottom – 70x145 mm
- One bottom located fan mounting position with guard. (fan not included)
- Metal solid welded construction. Sturdy design.
- Vented front and side for cooling.
- Abundant cable tie points included for cable management.
- Available in a durable texture electrostatic powder paint
  - 70-90µm thickness
  - 500 hours of Salt Spray test resistance
  - Adhesion capability EN ISO 2409 : Class 0 to 1
  - RAL7035 or RAL9005
- Max. Loading capacity: 100 kg

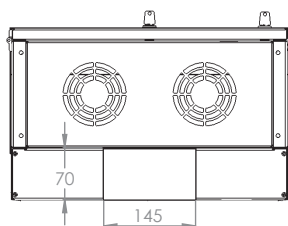
### Standarts :

- ISO 9001:2008
- TSE:EN 61587-1 Mechanical Structures For Electronic Equipment - Tests For IEC 60917 And IEC 60297
- Climatic and Environment: EN 61587-1/4.2, IEC60068-2-1, IEC60068-2-2, IEC60068-2-30,
- Static Mechanical Load Lifting: EN61587-1/5.2.1
- Static Mechanical Load Stiffness: EN61587-1/5.2.2
- Dynamic Mechanical Load Vibration and Shock , Impact: EN61587-1/5.3.1, EN61587-1/5.3.3, IEC60068-2-6, IEC60068-2-27,
- Earth Bond: EN61587-1/6.2
- Flammability: EN61587-1/6.3
- Degrees Of Protection Provided By Enclosures (Ip Code): IP20, EN61587-1/6.4

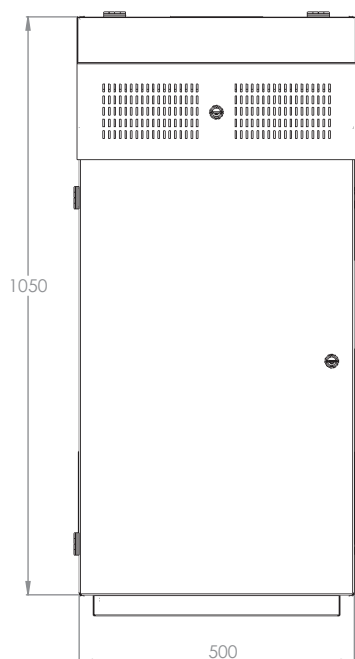


## SLIMBox Series – Wall Mounting 19" SERVER Cabinets W=500mm

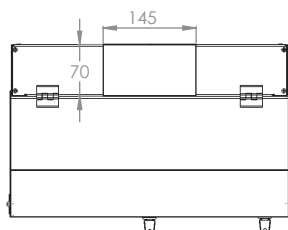
Wall Mounted 19" Server Cabinet Allow Vertical Mounting for Space Efficiency and Aesthetics. For Users Who Needs Sole Server Device and Economical Solution. Used for UPS, Networking, Security, DVR, Sound, Paging and Patching Applications. Suitable for any 19" Active Devices



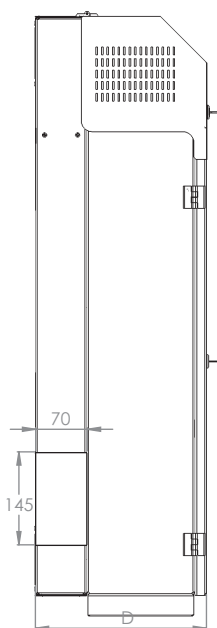
BOTTOM VIEW



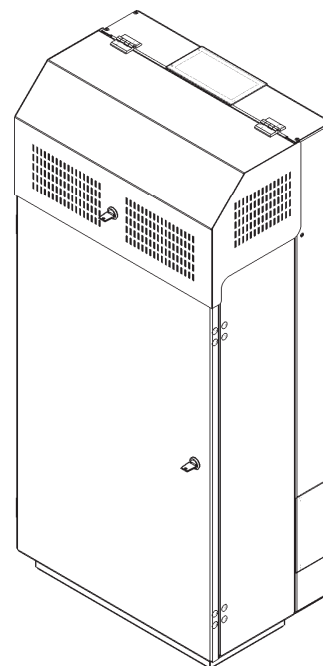
FRONT VIEW



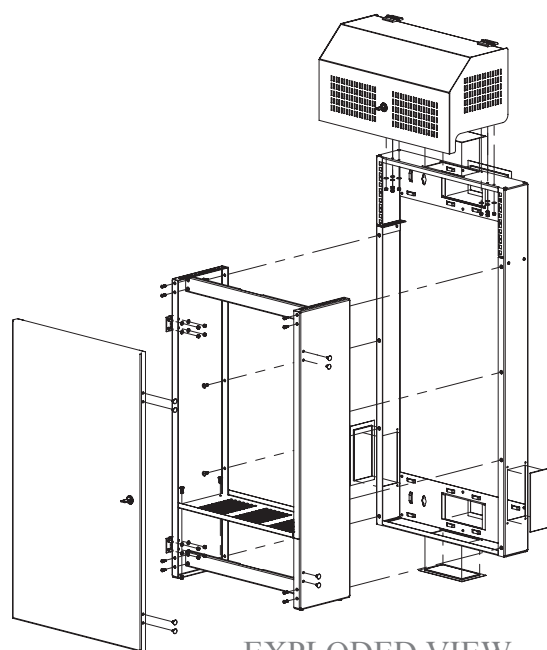
TOP VIEW



SIDE VIEW



ISOMETRIC VIEW



EXPLODED VIEW

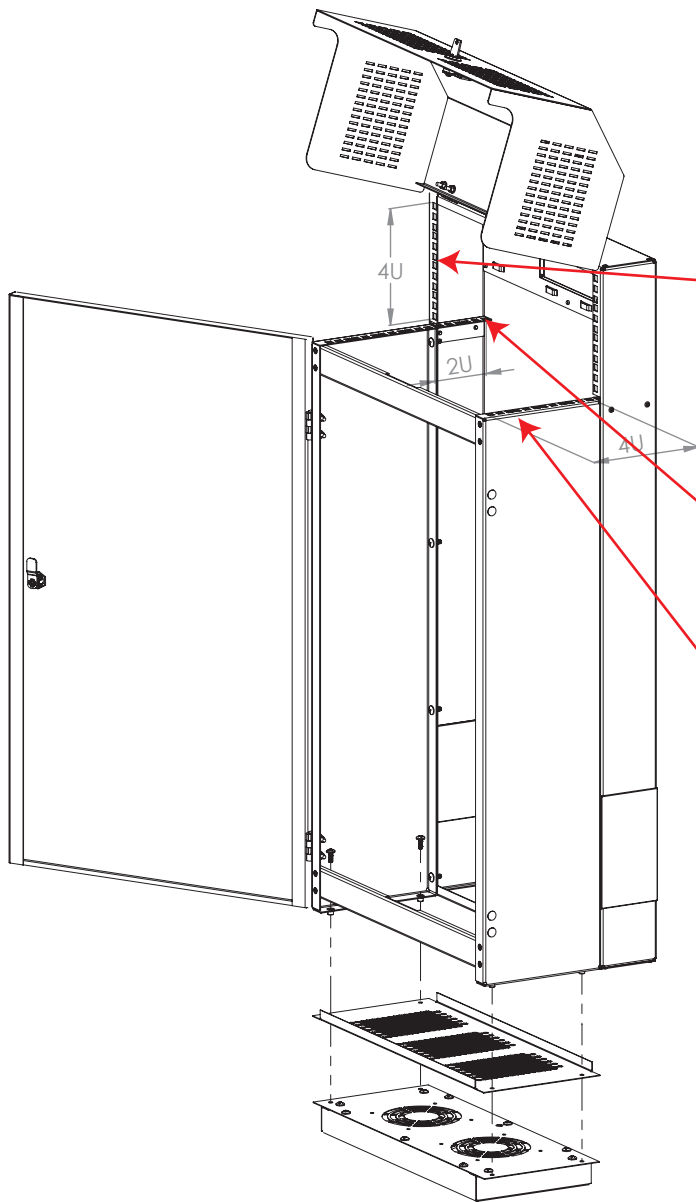
### SLIMBox Series - Wall Mounting 19" SERVER Cabinets W=500 mm

Catalog Code	Series	Product Description	Width (mm)	Depth (D:mm)	Height (mm)	Cable Entry (pcs)	Lock (pcs)	Hinge (pcs)
LN-WM SLM SRV 4U-CC	SlimBOX	4U 19" Wall Mounting SERVER Cabinet W=500 H=1050 D=310	500	310	1050	4	2	4
LN-WM SLM SRV 6U-CC	SlimBOX	6U 19" Wall Mounting SERVER Cabinet W=500 H=1050 D=400	500	400	1050	4	2	4

\*\* CC= Color Code please define while ordering the color code as LG Light Grey RAL 7035, BL Black RAL 9005

## SLIMBox Series – Wall Mounting 19" SERVER Cabinets W=500mm

Wall Mounted 19" Server Cabinet Allow Vertical Mounting for Space Efficiency and Aesthetics. For Users Who Needs Sole Server Device and Economical Solution. Used for UPS, Networking, Security, DVR, Sound, Paging and Patching Applications. Suitable for any 19" Active Devices



### 19" Provisions :

#### 4U and 6U version

There is one standard 19" Horizontal Passive Equipment Mounting area on the upper section with 4U assembly capacity. In this area mainly passive devices, like patch panels, brushed cable entry panels, Cable management panels or a PDU can be housed- this is common for 4U and 6U server version.

At the back of this 4U frontal Server housing- also a hidden 2U 19" provision, which also deeper equipments can be housed up to 740mm.

There is 19" 4U vertical SERVER device assembly on D310mm version called 4U server cabinet, and there is 19" 6U vertical SERVER device assembly on D400mm version called 6U server cabinet. These vertical assembly areas can accomodate up to 740mm devices.

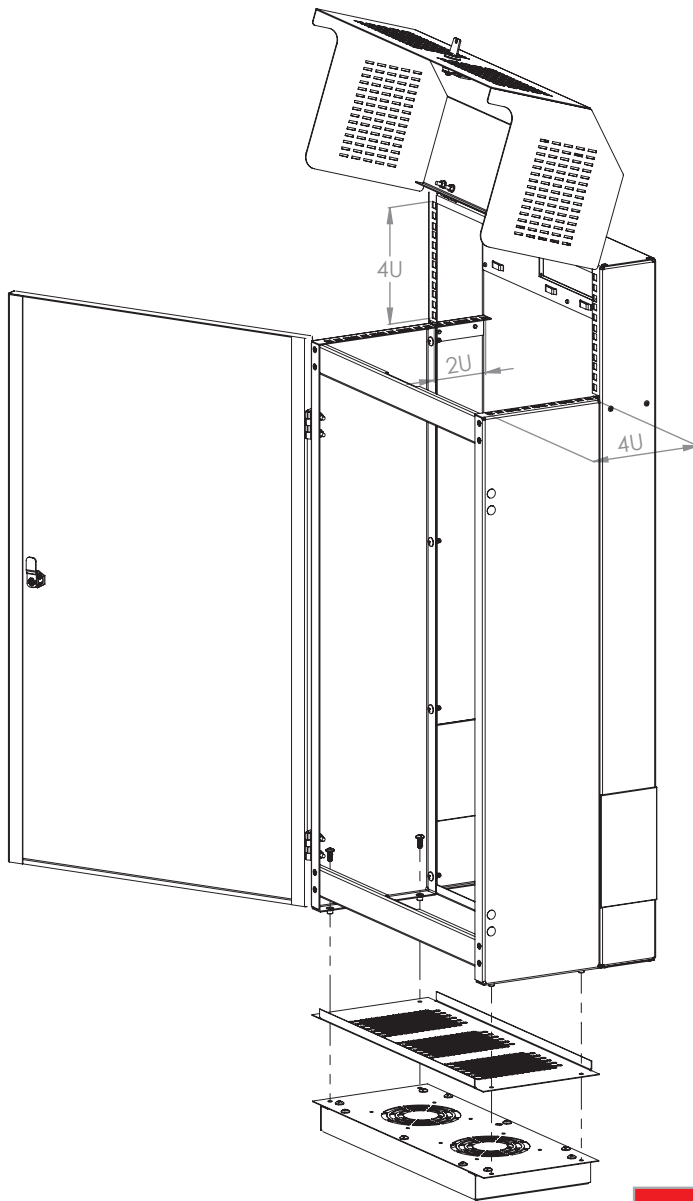
Ps: if 6U standard passive area is fully used and covered, there is no possibility to Access to the 2U area, recommended to use toolless blank panel 2U size- to allows accessing to the 2U area once needed

### OPTION VIEW

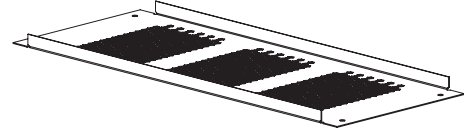
Shipping Configuration			
Part Definition	Material Quality	Material Thickness (mm)	Shipment Configuration
MAIN BODY	DIN EN 10130-DC-01-6112 CRS	1	1
FRONT DOOR	DIN EN 10130-DC-01-6112 CRS	1	1
SIDE PANELS	DIN EN 10130-DC-01-6112 CRS	1	2
SIDE PANEL SUPPORT BAR	DIN EN 10130-DC-01-6112 CRS	1,5	2
VENTILATION PANEL	DIN EN 10130-DC-01-6112 CRS	1	1
CABLE TIRE UP PANEL	DIN EN 10130-DC-01-6112 CRS	1	2
TOP COVER	DIN EN 10130-DC-01-6112 CRS	1	1
19" RAILS (2U)	DIN EN 10130-DC-01-6112 CRS	1	2

## SLIMBox Series – Wall Mounting 19" SERVER Cabinets W=500mm

Wall Mounted 19" Server Cabinet Allow Vertical Mounting for Space Efficiency and Aesthetics. For Users Who Needs Sole Server Device and Economical Solution. Used for UPS, Networking, Security, DVR, Sound, Paging and Patching Applications. Suitable for any 19" Active Devices

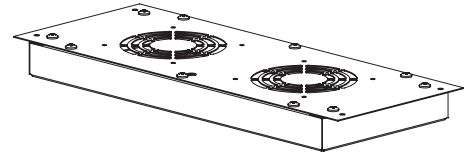


OPTION VIEW



OPTION 1

Option 1- ventilated Panels comes along with the product package as standard shipping configuration



OPTION 2

Option 1- 220V- 2 way Fan including 0-35C adjustable Thermostat integrated Fan Module is an accessory

### Optional 2way 220V AC fan with 0-35 Celcius Analog Thermostat

Catalog Code	Series	Product Description	Box Dimensions (HxWxD mm)
LN-FAN-THM-2FWMSL-CC	Accessory	2 way Fan AC 220 V, 0-35 Celcius Analog Thermostat Integrated, Module	500x235x50

\*\* CC= Color Code please define while ordering the color code as LG Light Grey RAL 7035, BL Black RAL 9005

### SLIMBox Series - Wall Mounting 19" Built in/ Tilt Out Racks W=600mm - Packaging Details

Catalog Code	Series	Product Description	Box Dimensions (HxWxD mm)	Pallet Dimensions (HxWxD mm)	Quantity on a pallet (pcs)
LN-WM SLM SRV 4U-CC	SlimBOX	4U 19" Wall Mounting SERVER Cabinet W=500 H=1050 D=310	530x330x1110	1100x1300x1800	10
LN-WM SLM SRV 6U-CC	SlimBOX	6U 19" Wall Mounting SERVER Cabinet W=500 H=1050 D=400	530x420x1110	1100x1300x1830	8

\*\* CC= Color Code please define while ordering the color code as LG Light Grey RAL 7035, BL Black RAL 9005